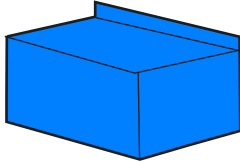


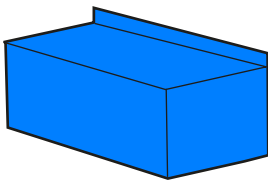
B 0 DEFO 00 00 DO

**Frontal Impact**



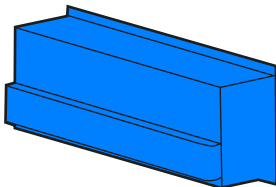
M 0 DEFO 00 00 DM

**Frontal MPDB Impact**



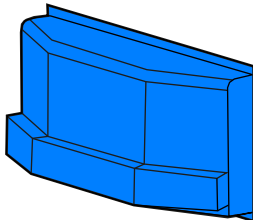
M 0 DEFO 00 00 DB

**Frontal Oblique Impact**



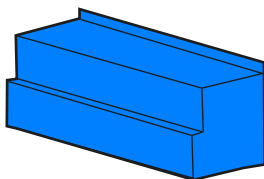
M 0 DEFO 00 00 DN

**Rear and Side Impact**



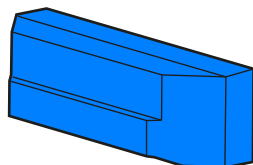
M 0 DEFO 00 00 DI

**Side Impact**



M 0 DEFO 00 00 DE

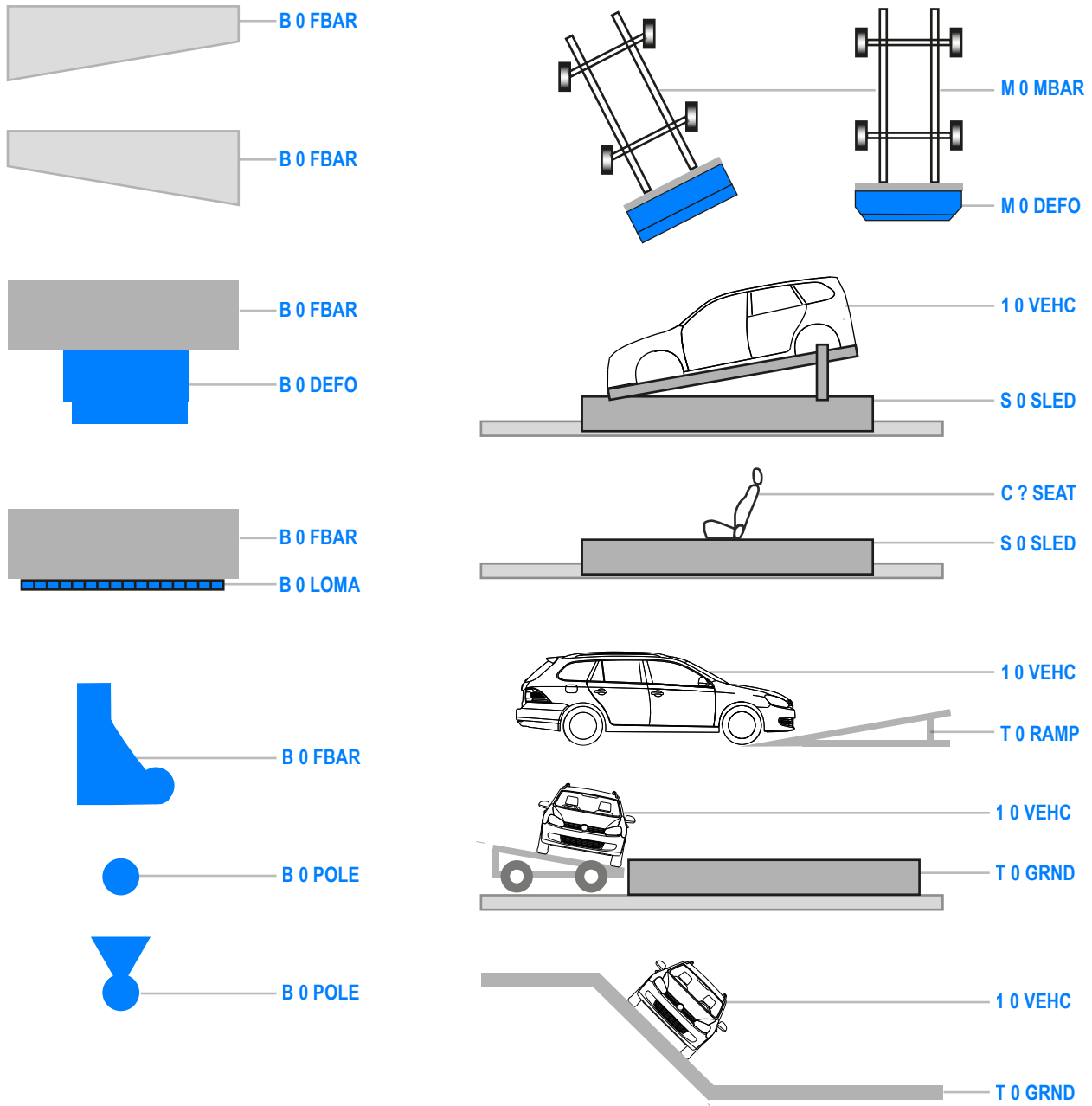
**Side Impact**



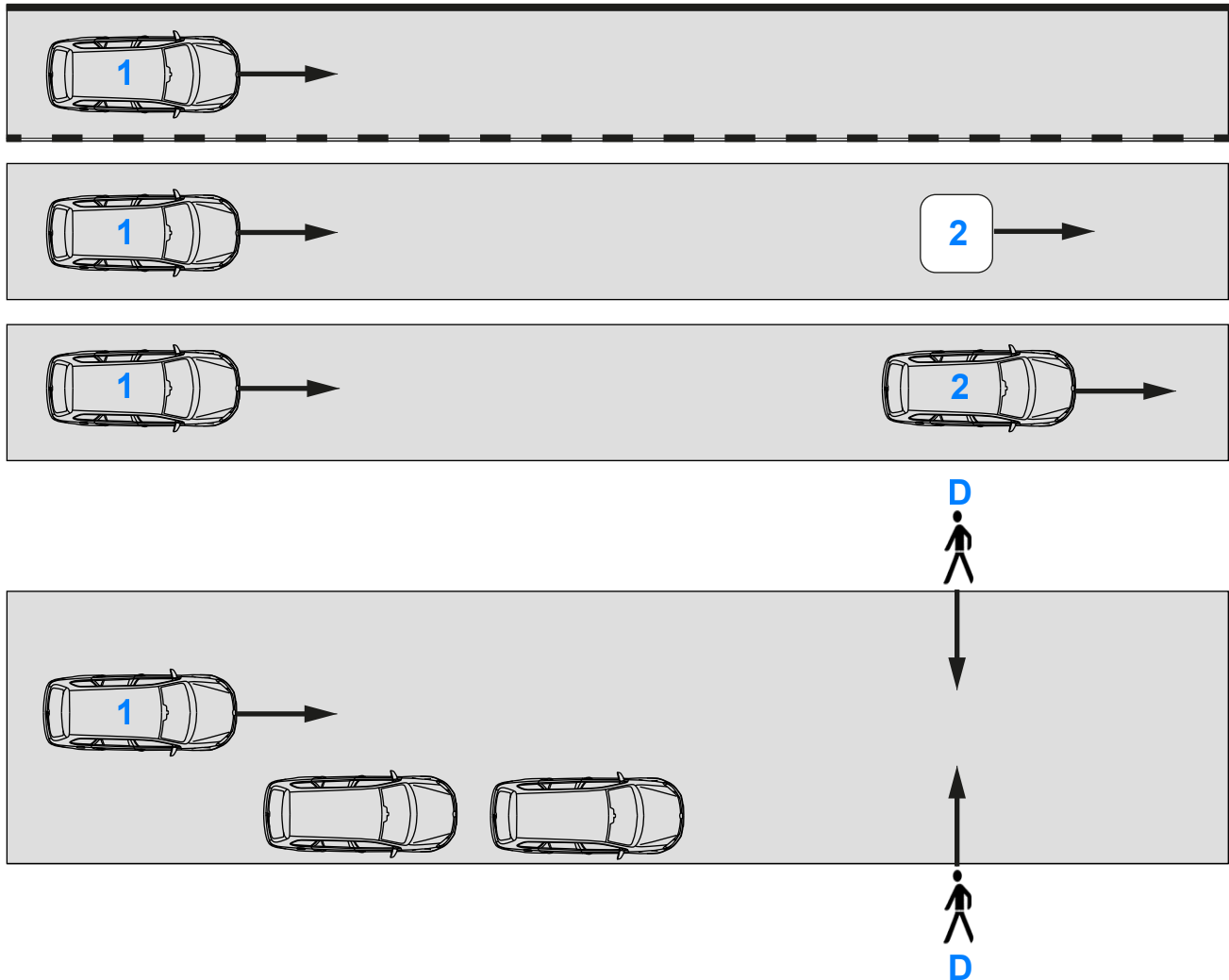
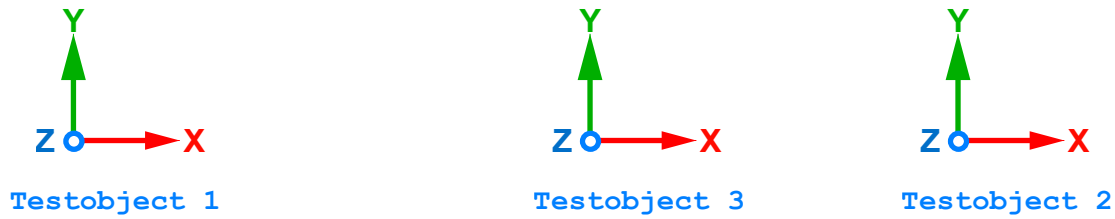
M 0 DEFO 00 00 DA

**Side Impact**

B 0 DEFO 00 00 DO Deformable Element for Frontal Offset Tests  
M 0 DEFO 00 00 DM Deformable Element according ADAC MPDB Test  
M 0 DEFO 00 00 DB Deformable Element according NHTSA Frontal Oblique Tests  
M 0 DEFO 00 00 DN Deformable Element according NHTSA Rear and Side Tests  
M 0 DEFO 00 00 DI Deformable Element according IIHS Test  
M 0 DEFO 00 00 DE Deformable Element EuroNCAP Advanced 2000  
M 0 DEFO 00 00 DA Deformable Element AEMDB



? 0 VEHC	Vehicle ? (1...9)
B 0 FBAR	Fixed Barrier
B 0 POLE	Pole
M 0 MBAR	Mobile Barrier
? 0 LOMA	Load Cell Matrix
? 0 DEFO	Deformable Element
S 0 SLED	Sled
C ? SEAT	Seat (for component tests without vehicle structure)
T 0 GRND	Surface/Plane of Sand Bed, Embankment or Testrig
T 0 RAMP	Ramp - part with variable height or angle to turn vehicles



Testobject 1	1	Vehicle 1	(VUT = Vehicle under Test, SV = Subject Vehicle)
Testobject 2	2	Vehicle 2	(EVT = EuroNCAP Vehicle Target , POV = Principle Other Vehicle)
	D	Pedestrian	(VRU = Vulnerable Road User, EPT = EuroNCAP Pedestrian Target)
Testobject 3	T	Test Area	

#### Caution!

The coordinate reference system according ISO\_8855\_1991  
is different to SAE\_J211\_1985.